

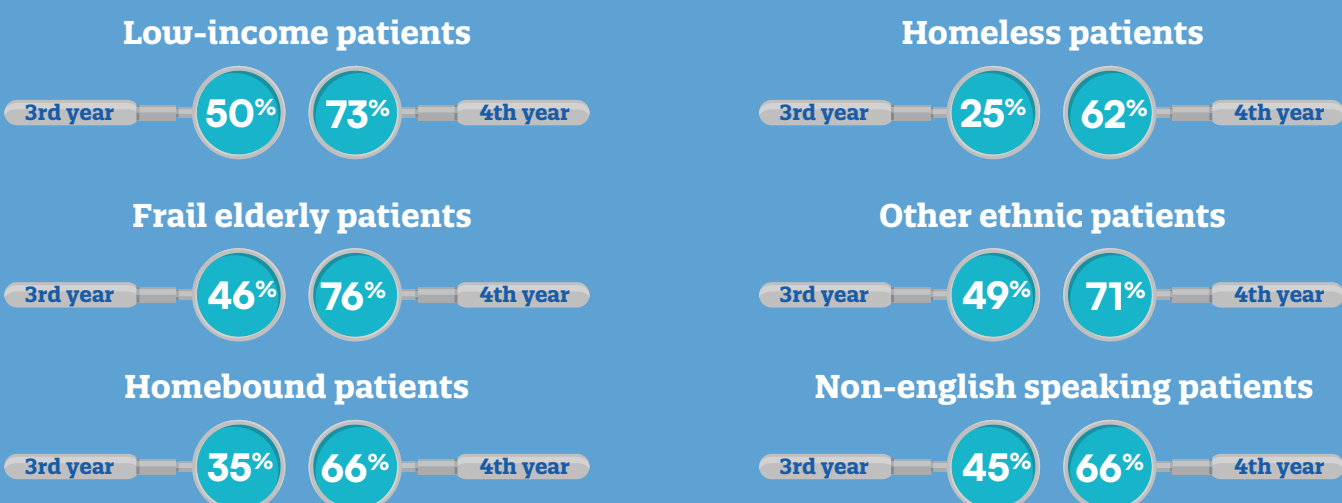


A CLOSER LOOK AT IMPROVING ACCESS TO DENTAL CARE THROUGH DENTAL EDUCATION

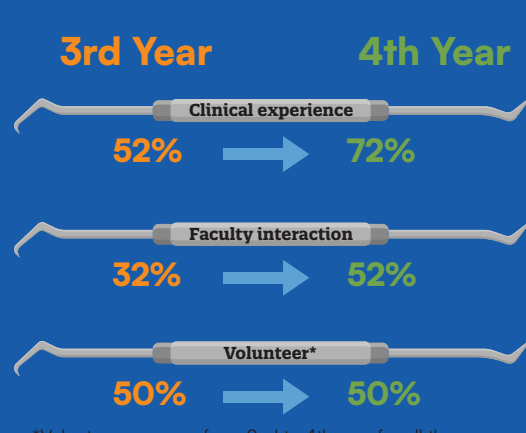
Addressing disparities in dental education and access to care contributes to equity in education and dental care delivery, fostering equality and improving overall health outcomes for underserved communities

CHANGES IN DENTAL STUDENTS' ATTITUDES

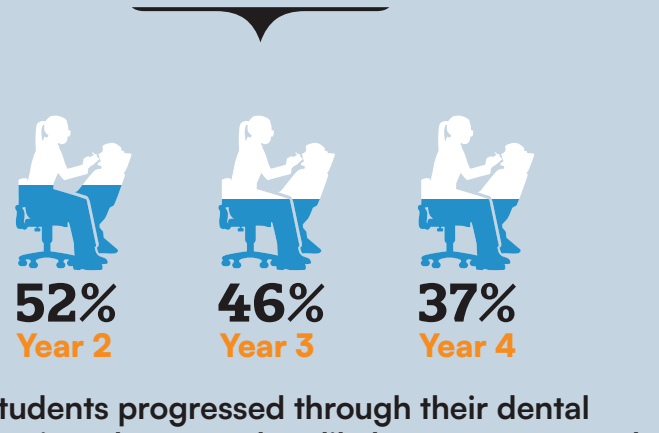
Students willingness towards treating undeserved populations from their 3rd to 4th year in dental school



Impact of events that affect 3rd to 4th year students' desire to treat underserved populations



Percentage of students feel a responsibility to provide care to underserved populations



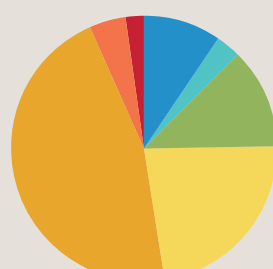
Major, N., McQuistan, M. R., & Qian, F. (2016). Changes in dental students' attitudes about treating underserved populations: A longitudinal study. *Journal of Dental Education*, 80(5), 499-629. <https://doi-org.libproxy.nau.edu/10.1002/j.0022-0337.2016.80.5.tb06111.x>

COMMUNITY-BASED DENTAL EDUCATION

43,128

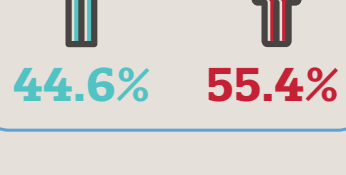
patients treated by dental students of University of Minnesota at community dental clinics over a three year period

25% of total were pediatric patients



Racial/ethnic breakdown of care provided by Students

Breakdown by gender



91%

of dental schools require all students to participate in extramural clinical rotations

94%

of graduating seniors in the class of 2016 reported having spent at least a week in CBDE

140,761 (\$16.6 million)

number and value of CBDE treatment procedures provided by students at the University of Minnesota over a 3 year period

Mays, K. A., & Maguire, M. (2018). Care provided by students in community-based dental education: Helping meet oral health needs in underserved communities. *Journal of Dental Education*, 82(1), 3-90. <https://doiorg.libproxy.nau.edu/10.21815/JDE.018.003>

POSTGRADUATE EDUCATION AND ACCESS TO DENTAL CARE

93

Number of health facilities have been funded by Health Resource & Services Administration (HRSA) since 2021



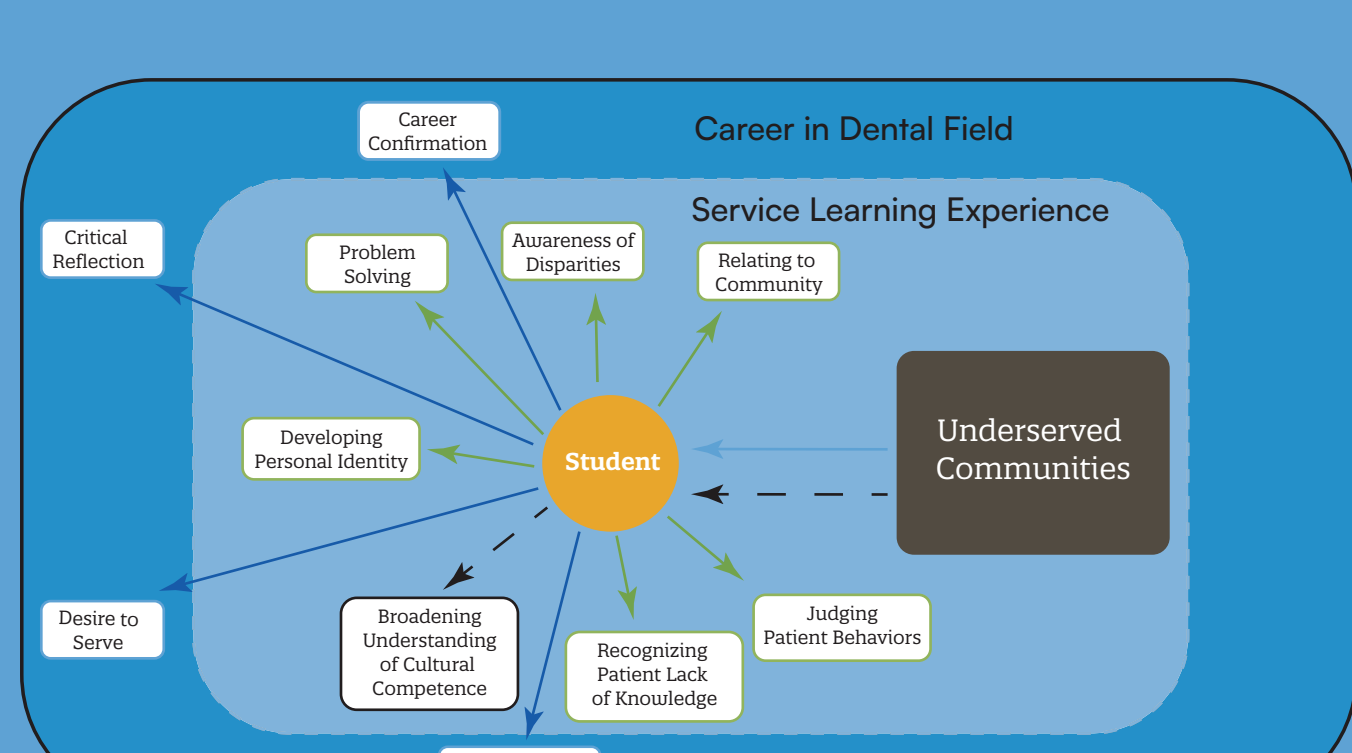
Of these, 23 included new dental programs through Teaching Health Centers (THC)

Five stages of the Teaching Health Centers (THC) Dental Program Development Framework that supports dental grantees

- 1 Exploration
- 2 Design
- 3 Development
- 4 Startup
- 5 Maintenance

Page, C. P., Koday, M., Zamierowski, A. M., Weidner, A., & Hawes, E. M. (2023). Postgraduate education to expand access to dental care: A roadmap to community dental program development. *Journal of Dental Education*, 87(9), 1215-1373. <https://doi-org.libproxy.nau.edu/10.1002/jdd.13242>

ENHANCING STUDENT AWARENESS AND DESIRE TO SERVE VULNERABLE POPULATIONS



Grounded Theory Analysis of Student Experiences (Behar-Horenstein et al., 2015, Figure 1)

Behar-Horenstein, L. S., et al. (2015). Developing dental students' awareness of health care disparities and desire to serve vulnerable populations through service-learning. *Journal of Dental Education*, 79(10), 1135-1253. <https://doi-org.libproxy.nau.edu/10.1002/j.0022-0337.2015.79.10.tb06012.x>

ENHANCING ACCESS THROUGH DENTAL EDUCATION

Tuition Subsidies and Public Service

tuition subsidies for in state dental students who commit to future public service

Practice Behavior

Factors influencing dentists' practice behavior,

- 1 Market influences
- 2 Geographic location
- 3 Impact of tuition subsidies

Financial Impact

\$296 million Public investment in public dental education subsidies. Supporting 2,800 graduates.

\$105,731 per graduate Estimated market value of subsidies provided to students of publicly supported dental schools

\$45 million Amount State and local support for public dental education declined between 2008 and 2010.

Recommendations

Tuition discounts based on commitments to public service and using loan forgiveness programs to incentivize graduates to practice in underserved areas.

Conclusion

Tuition discounts for public service commitments could be a viable solution.

Page, C. P., Koday, M., Zamierowski, A. M., Weidner, A., & Hawes, E. M. (2023). Postgraduate education to expand access to dental care: A roadmap to community dental program development. *Journal of Dental Education*, 87(9), 1215-1373. <https://doi-org.libproxy.nau.edu/10.1002/jdd.13242>